

# Ichsan ICWT 2021 Augmented

*by Ichsan Icwt Augmented*

---

**Submission date:** 02-May-2023 02:01PM (UTC+0700)

**Submission ID:** 2081838750

**File name:** roduce\_Batik\_Garutan\_Using\_Features\_Accelerated\_Segment\_Test.pdf (3.96M)

**Word count:** 2618

**Character count:** 14123

# Augmented Reality Approach to Introduce Batik Garutan Using Features Accelerated Segment Test

**1<sup>st</sup>** Rizaldi Andriansyah  
*Department of Informatics*  
*UIN Sunan Gunung Djati*  
Bandung, Indonesia  
rizaldiandriansyah102@gmail.com

**2<sup>nd</sup>** Nur Lukman  
*Department of Informatics*  
*UIN Sunan Gunung Djati*  
Bandung, Indonesia  
n.lukman@uinsgd.ac.id

**3<sup>rd</sup>** Ichsan Taufik  
*Department of Informatics*  
*UIN Sunan Gunung Djati*  
Bandung, Indonesia  
ichsan@uinsgd.ac.id

**3<sup>rd</sup>** 4<sup>th</sup> Agung Wahana  
*Department of Informatics*  
*UIN Sunan Gunung Djati*  
Bandung, Indonesia  
agung.wahana@uinsgd.ac.id

**5<sup>th</sup>** Dian Sa'adillah Maylawati  
*Department of Informatics*  
*UIN Sunan Gunung Djati*  
Bandung, Indonesia  
diansm@uinsgd.ac.id

**6<sup>th</sup>** Beki Subaeki  
*Department of Information System,*  
*Informatics and Business Indonesia*  
*University*  
Bandung, Indonesia  
beki.subaeki@usbykpk.ac.id

**3<sup>rd</sup>** 7<sup>th</sup> Putri Diesy Fitriani  
*Department of Informatics*  
*UIN Sunan Gunung Djati*  
Bandung, Indonesia  
putridiesy@uinsgd.ac.id

**Abstract**— This study aims to introduce the art of Batik Garutan with a variety of existing motifs using Augmented Reality (AR) technology so that Batik Garutan can be known interestingly, the method used is Features from Accelerated Segment Test (FAST), where there are several stages of the process including the process of resizing the image, the process of changing the image to grayscale, the process of alignment of gray color (Histogram), and the threshold process for determining the point on the marker. Marker objects are used in Batik Garutan motifs in the form of fabrics, shirts, and dresses. The FAST Corner Detection algorithm on Batik Garutan can detect markers with an average detection time of 0.315. The introduction of Batik Garutan on android mobile devices is very beneficial, practical, and easy to use. It is seen from questionnaires conducted by 42 respondents with an average percentage of answers reached 85.94%, which means it falls into the category very well.

**Keywords**—Augmented Reality, Batik Garutan, Features Accelerated Segment Tes.

## I. INTRODUCTION

Along with the development of batik and the increasingly known batik as a heritage of Indonesian tradition, almost every corner of Indonesia has its distinctive batik, one of which is Garut. Garut has its batik characteristic, called Batik Garutan, but still many do not know about Batik Garutan itself. Batik itself is one of Indonesia's cultural heritage that has gone global and becomes Indonesia's brand image registered and recognized by the United Nations of Educational, Scientific and Cultural Organization (UNESCO) and obtained copyright as one of Indonesia's rich cultural heritage. In Batik Garutan, there are many motifs that are inspired by people's lives, such as Bulu Hayam batik motifs, Lereng Kangkung batik motifs, Merak Ngibing Batik motifs, Lereng Barong Batik motifs, Cupat Manggu

Batik motifs and so on. Therefore many Batik Garutan industry continues to create new motifs with their meaning[1].

Along with the development of technology, the application of Augmented Reality Technology (AR) is currently widely used for the media introduction of a characteristic regional product to be known by the general public because it provides an exciting user experience. Augmented Reality (AR) is a technology that connects virtual worlds in both 2D and 3D into the real world in real-time[2]. Two categories must exist in Augmented Reality, namely based on the presence or absence of markers (Marker-Based) and without markers (Markerless). AR is a multimedia technology that is currently widely used for learning because it is considered more interactive and interesting[3][4][5], including Tajweed learning[6], hijaiyah letter learning[7], digestive organ learning[8], application of AR for tourism[9], Health care education[10], marketing strategies[11], and AR implementation in other fields.

Indonesia is a rich country, recorded Indonesia has 13,446 islands, 726 regional languages and recorded to have 5849 types of batik, including Batik Garutan based on research conducted by Bandung Fe Institute, the many types of batik makes the public less familiar with the batik, so researchers want to emphasize more on the introduction of Batik Garutan motifs. This research aims to implement Augmented Reality technology to better introduce Batik Garutan by following the development of an era where a 2D object becomes

visible 3D. The method used is Features from Accelerated Segment Test (FAST) Corner Detection as a determinant of corner point or angle detection to detect the angle of an image[12].

## II. RESEARCH METHOD

In the research on the introduction of Batik Garutan using augmented reality technology, there are stages of research activities as shown in Figure 1. below:

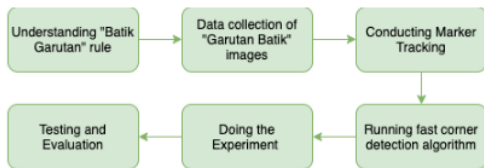


Fig. 1. Activity Research

### A. Augmented Reality

Augmented Reality Was first used from 1957 to 1962 by a cinematographer named Norton Heilig, named Sensorama. Sensorama is a simulator that can simulate visuals, vibrations, and smells. Augmented Reality can be used in various activities, such as presentations, estimating an object, work stimulant equipment, and others[5].

There are three characters from Augmented Reality, namely the combination of natural with virtual, Interactive and in real-time, Presented in three-dimensional form. Augmented Reality technology in its application can be intended for all senses ranging from hearing, vision, and touch. This technology is used in some areas such as entertainment, medicine, robot design, learning media, and promotional media[5].

In general, Augmented Reality has two methods, Marker Tracking is a method that uses Markers to bring up its 3-dimensional Objects, and Markerless Tracking is a method that does not use markers to bring up its 3-Dimensional Objects[13][14]–[16].

### B. Features from Accelerated Segment Test (FAST) Corner Detection

The Features Accelerated Segment Test method is a method developed by Edward Rosten, Reid Porter, and Tom Drummond. It was built with the aim to speed up real-time computing time to lower the accuracy of angular detection. FAST Corner detection determines the corner point by changing the image to black-and-white color and running the algorithm. This corner point determination facilitates scanning angle angles to display 3D images through predefined 2D images[6][12].

This FAST Corner Detection method uses a type of High-Speed test where the application of this method takes 4 points from 16 pixels then compares 4-pixel intensity with the p point as the center point, each pixel in 16 pixels is divided into three predefined comparison states such as (1) for darker, (2) for similar, (3) for brighter[17][6].

$$I_{p \rightarrow x} \leq I_p - t \quad (1)$$

$$I_p - t < I_{p \rightarrow x} < I_p + t \quad (2)$$

$$I_p + t \leq I_{p \rightarrow x} \quad (3)$$

where,

$I_p$  = Intensity of center point

$I_n$  = nth neighbor intensity point

$t$  = threshold value

$I_{p \rightarrow x}$  = pixel intensity of x

The FAST Corner detection process can be seen in figure 2

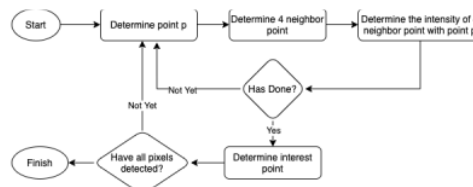


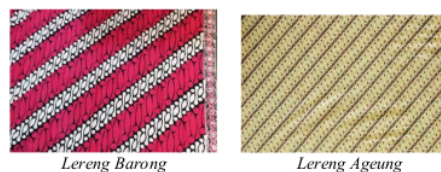
Fig. 2. Flowchart of FAST Corner Detection

## III. RESULTS AND DISCUSSION

This section will discuss the research results, from data collection to evaluation of the results of experiments conducted

### A. Understanding of Batik Garutan and Image Data

Data used in the form of Batik Garutan motif design, there are 10 batik motifs used, namely the motif of *Lereng Barong*, *Lereng Ageung*, *Merak Ngibing*, *Lereng Suliga*, *Manggis*, *Lereng Jaksa*, *Lereng Kangkung*, *Patah Tebu*, *Sapu Jagat*, and *Suliga Bunga*, from each motif consists of 3 marker images, namely fabric markers, shirt markers and dress markers, Batik Garutan motifs are shown in figure 2 below :



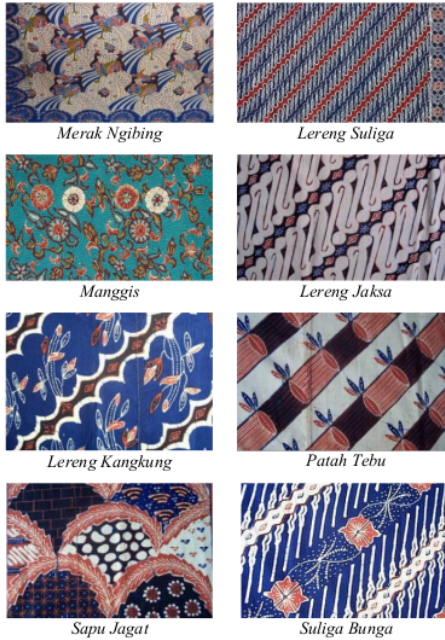


Fig. 3. Batik Motif

**B. Implementation Features from Accelerated Segment Test (FAST) Corner Detection**

Once the image data is known, then fast implementation, batik image will be processed as a marker. .jpg or .png format image uploaded to the Vuforia website through the marker engine provided by Vuforia to produce a file with a unit package format with a maximum file size of 2MB to be singled out on the Target Manager System provided by Vuforia, the image or image will be resized, converted in grayscale form, converted back in histogram form, the threshold to become a marker, depicted in figure 4.



Fig. 4. Stages of marker formation

Based on the previous discussion listed in figure 4, that the next step is to resize. After the image is inserted into the Vuforia database, the image size is automatically reduced to 320\*320 pixels shown in figure 5.

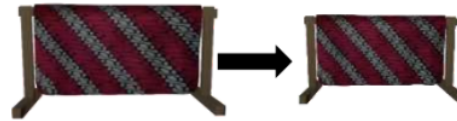


Fig. 5. Resize Image

After successfully minimized, the process of converting grayscale is to change from RGB to Grayscale or change the image to grayish or Grayscale process with an intensity of 0 for black, 255 for white, and vulnerable 0 - 255 for gray color shown in figure 6.



Fig. 6. Convert RGB to Grayscale

The next step converts grayscale to histogram where degrees of grayish color is leveled, shown in figure 7.

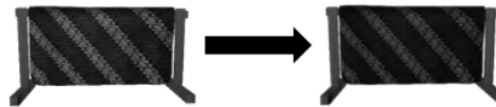


Fig. 7. Convert Grayscale to Histogram

Figure 8 illustrates the change from histogram to the threshold, which describes a threshold intensity that is the reference for determining point marker points.



Fig. 8. Convert Histogram to Threshold

Figure 9 describes the process of positioning point points by matching using the FAST algorithm. A point on threshold has the purpose of determining the number of point points produced. The more point points produced, the better the marker pattern.



Fig. 9. Point Assignment on Image for Marker

The Process of FAST Algorithm (Features Accelerated Segment Test) Corner Detection begins with the determination of the p point on the coordinate  $(x_p, y_p)$  on the image and comparing the



and Dress detected in its entirety with different times and can be averaged for the detection time of 0.315 Seconds. This research uses marker-based so it can only be done if there is a marker used, if you want to detect batik other than Batik Garutan then the marker must be recognized first.

## REFERENCES

- [1] E. TitaTosida, A. Djati Walujo, and D. Ardiansyah, "Media Belajar Batik Berbasis Teknologi Augmented Reality," in *PROCEEDINGS UNIVERSITAS PAMULANG*, 2019, vol. 1, no. 1.
- [2] Nelly Otavia Adiwijaya and Yuni Wahyu Hapdini, "Implementation of Augmented Reality for Interactive Brochures with The Fast Comer Detection Method," in *Proceeding Seminar Nasional APTIKOM*, 2016.
- [3] D. Nincarean, M. B. Alia, N. D. A. Halim, and M. H. A. Rahman, "Mobile Augmented Reality: The Potential for Education," *Procedia - Soc. Behav. Sci.*, vol. 103, pp. 657–664, Nov. 2013.
- [4] M. Kesim and Y. Ozarslan, "Augmented Reality in Education: Current Technologies and the Potential for Education," *Procedia - Soc. Behav. Sci.*, vol. 47, pp. 297–302, Jan. 2012.
- [5] L. Hakim, "Development of Augmented Reality PAI Learning Media (in Bahasa: Pengembangan Media Pembelajaran PAI Berbasis Augmented Reality)," *Lentera Pendidik. J. Ilmu Tarb. dan Kegur.*, vol. 21, no. 1, pp. 59–72, Jun. 2018.
- [6] A. P. Andriyandi, W. Darmalaksana, D. Sa'adillah Maylawati, F. S. Irwansyah, T. Mantoro, and M. A. Ramdhani, "Augmented reality using features accelerated segment test for learning tajweed," *TELKOMNIKA (Telecommunication Comput. Electron. Control)*, vol. 18, no. 1, pp. 208–216, Feb. 2020.
- [7] "Application Education For Introduction Hijaiyah With Technology Augmented Reality Magic Card | IEEE Conference Publication | IEEE Xplore." [Online]. Available: <https://ieeexplore.ieee.org/abstract/document/8965361>. [Accessed: 14-Apr-2021].
- [8] R. E. Saputro and D. I. S. Saputra, "Learning Media Development to Know Human Digestive Organs Using Augmented Reality Technology," *J. Buana Inform.*, vol. 6, no. 2, May 2015.
- [9] D.-I. Han, T. Jung, and A. Gibson, "Dublin AR: Implementing Augmented Reality in Tourism," in *Information and Communication Technologies in Tourism 2014*, Springer International Publishing, 2013, pp. 511–523.
- [10] J. Gerup, C. B. Soerensen, and P. Dieckmann, "Augmented reality and mixed reality for healthcare education beyond surgery: an integrative review," *Int. J. Med. Educ.*, vol. 11, pp. 1–18, Jan. 2020.
- [11] T. Liao, "Augmented or admented reality? The influence of marketing on augmented reality technologies," *Inf. Commun. Soc.*, vol. 18, no. 3, pp. 310–326, Mar. 2015.
- [12] R. Prathivi, "Comer Detection Based Recognition Feature With Fast, Surf and Flann Tree Methods to Identify Logo in Augmented Reality Mobile System," *J. Transform.*, vol. 11, no. 2, p. 51, Jan. 2014.
- [13] I. D. Perwitasari, "Augmented Reality Marker Based Tracking Technique for Visualizing the Anatomy of Human Organs Based on Android (in Bahasa: Teknik Marker Based Tracking Augmented Reality untuk Visualisasi Anatomi Organ Tubuh Manusia Berbasis Android)," *INTECOMS J. Inf. Technol. Comput. Sci.*, vol. 1, no. 1, pp. 8–18, Mar. 2018.
- [14] J. Ferrer-Torregrosa, J. Torralba, M. A. Jimenez, S. Garcia, and J. M. Barcia, "ARBOOK: Development and Assessment of a Tool Based on Augmented Reality for Anatomy," *J. Sci. Educ. Technol.*, 2015.
- [15] C. H. Chen, C.-H. Ho, and J.-B. Lin, "The Development of an Augmented Reality Game-based Learning Environment," *Procedia - Soc. Behav. Sci.*, 2015.
- [16] R. T. Azuma, "A survey of augmented reality," *Presence: Teleoperators and Virtual Environments*. 1997.
- [17] K. Dohi, Y. Yorita, Y. Shibata, and K. Oguri, "Pattern compression of fast corner detection for efficient hardware implementation," in *Proceedings - 21st International Conference on Field Programmable Logic and Applications, FPL 2011*, 2011, pp. 478–481.

# Ichsan ICWT 2021 Augmented

---

## ORIGINALITY REPORT

---

19%

SIMILARITY INDEX

19%

INTERNET SOURCES

%

PUBLICATIONS

%

STUDENT PAPERS

---

## PRIMARY SOURCES

---

1	<a href="http://journal.uad.ac.id">journal.uad.ac.id</a> Internet Source	7%
2	<a href="http://www.rogerpollard.org">www.rogerpollard.org</a> Internet Source	3%
3	<a href="http://www.atlantis-press.com">www.atlantis-press.com</a> Internet Source	3%
4	<a href="http://journal.unnes.ac.id">journal.unnes.ac.id</a> Internet Source	2%
5	<a href="http://iiste.org">iiste.org</a> Internet Source	1%
6	<a href="http://transit.ftik.usm.ac.id">transit.ftik.usm.ac.id</a> Internet Source	1%
7	<a href="http://www.researchgate.net">www.researchgate.net</a> Internet Source	1%
8	<a href="http://www.spell.org.br">www.spell.org.br</a> Internet Source	1%

---

Exclude quotes On

Exclude bibliography On

Exclude matches < 1%